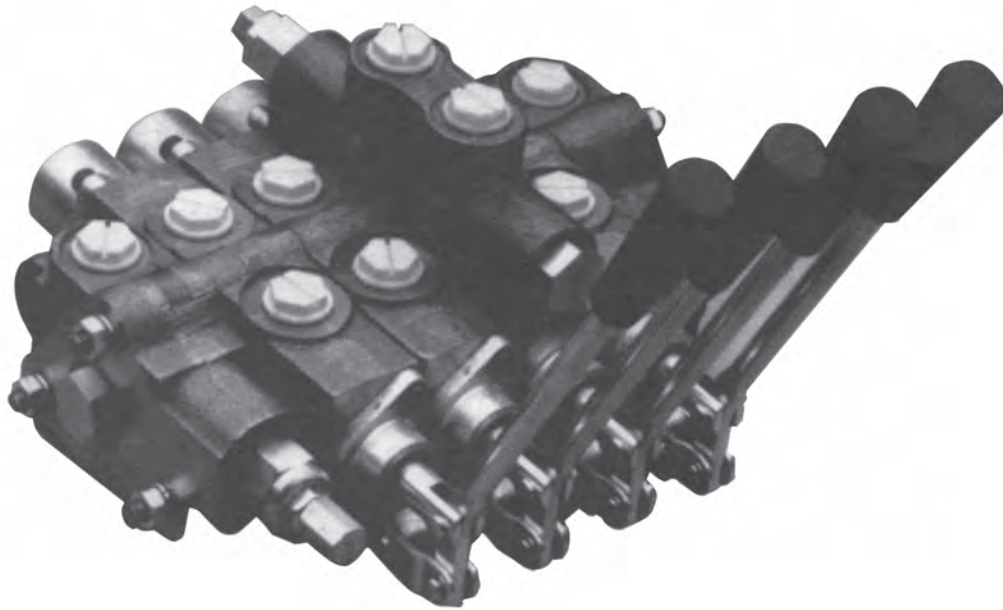


# Directional Control Valves

## SECTIONAL BODY



*Model SV*

- 1-10 Sections Per Valve Bank
- Load Checks On Each Section
- Hard Chrome Plated Spools
- Compact Construction
- Enhanced Metering Section Available in both the High and Low Sections

### STANDARD FEATURES

- Differential Poppet Style Relief, Adjustable from 1500 to 3000 psi (Also available in Low Pressure Version Adjustable from 500 to 1500 psi)
- Power Beyond Capability
- Reversible Handle
- Mid-Inlet and Lock Valve Section available
- Flow Control Inlet

### SPECIFICATIONS

#### Parallel or Series Circuit Construction Pressure Rating

Maximum Operating Pressure ..... 3000 psi  
Maximum Tank Pressure..... 500 psi

**Nominal Flow Rating** ..... 12 GPM  
Refer to Pressure Drop Curves.

**Filtration:** For general purpose valves, fluid cleanliness should meet the ISO 4406 19/17/14 level. For extended life or for pilot operated valves, the 18/16/13 fluid cleanliness level is recommended.

#### Foot Mounting

**Maximum Operating Temp.**..... 180°F

#### Weight Per Section

Inlet Section ..... Approx 3.75 lbs.  
Outlet Section ..... Approx 3.75 lbs.  
Work Section (Standard) ..... Approx 5.50 lbs.  
Work Section (High) ..... Approx 8.00 lbs.

## ORDERING INFORMATION:

The following is a listing of valve sections available from stock on a standard basis.

### STANDARD SECTIONS AVAILABLE:

#### INLET SECTIONS ALL HAVE BOTH TOP AND SIDE INLET PORTS

##### PART NO. RELIEF TYPE AND SETTING

SVI21	No Relief
SVI24	Adjustable Low Pressure Relief Set at 1000 PSI
SVI15	Adjustable High Pressure Relief Set At 2000 PSI
SVI25	Adjustable High Pressure Relief Set at 2000 PSI

##### PORT SIZE

#10 SAE ORB (7/8-14 THD)
#10 SAE ORB (7/8-14 THD)
#8 SAE ORB (3/4-16 THD)
#10 SAE ORB (7/8-14 THD)

#### WORK SECTIONS ALL HAVE #8 SAE ORB (3/4-16 THD) PORTS, LOAD CHECK AND STANDARD LEVER HANDLE

##### PART NO. SPOOL TYPE AND ACTION

SVW1AA1	3-Way Single Acting w/ Spring Center
SVW1BA1	4-Way Double Acting w/ Spring Center (Work Ports Blocked in Neutral)
SVW1BB1	4-Way Double Acting w/ 3 Position Detent (Work Ports Blocked in Neutral)
SVW1CA1	4-Way Motor Spool w/ Spring Center (Work Ports Open to Tank in Neutral)
SVW1CB1	4-Way Motor Spool w/ 3 Position Detent (Work Ports Open to Tank in Neutral)
SVW1DD1	4-Way 4 Position Float w/ Spring Center and Float Detent
SVL1CA1	4-Way Spool w/ Spring Center (with Pilot Operated Checks on Both Work Ports)
SVM1ES1	4-Way Meter Spool w/ Spring Center (Work Ports Blocked in Neutral)

#### PORT RELIEF WORK SECTIONS ALL HAVE #8 SAE ORB (3/4-16 THD) PORTS, LOAD CHECK AND STANDARD LEVER HANDLE. MODELS WITH RELIEF FACTORY SET AT 2000 PSI AT 3 GPM.

##### PART NO. SPOOL TYPE AND ACTION

SVH1BA1AA	4-Way Double Acting w/ Spring Center
SVH1BA1GG	4-Way Double Acting w/ Spring Center
SVH1DD1AA	4-Way 4 Position Float w/ Spring Center and Float Detent
SVH1DD1BB	4-Way 4 Position Float w/ Spring Center and Float Detent
SVR1ES1AA	4-Way Meter Spool w/ Spring Center
SVR1ES1GG	4-Way Meter Spool w/ Spring Center
SVS1GA1GG	4-Way Double Acting Series w/ Spring Center
SVS1GA1AA	4-Way Double Acting Series w/ Spring Center

##### PORT RELIEFS

Port Relief Plugged
Adjustable 1500-3000 PSI
Port Relief Plugged
Shim Adjustable 1500-3000 PSI
Port Relief Plugged
Adjustable 1500-3000 PSI
Adjustable 1500-3000 PSI
Port Relief Plugged

#### OUTLET SECTIONS ALL HAVE BOTH TOP AND SIDE OUTLET PORTS

##### PART NO. EXHAUST OPTIONS

SVE11	Open Center Outlet w/ Conversion Plug
SVE21	Open Center Outlet w/ Conversion Plug
SVE22	Power Beyond Outlet w/ #8 SAE Beyond Port
SVE23	Closed Center Outlet
SVE26	Open Center Outlet Pressure Build-up Valve
SVE27	Power Beyond Pressure Build-up Valve

##### PORT SIZE

#8 SAE ORB (3/4-16 THD)
#10 SAE ORB (7/8-14 THD)
#10 SAE ORB (7/8-14 THD)
#10 SAE ORB (7/8-14 THD)
#10 SAE ORB (7/8-14 THD)
#10 SAE ORB (7/8-14 THD)

#### TIE ROD KITS

TIE ROD TORQUE  
150in-lbs ± 6in-lbs  
(12 1/2 ft-lbs ±1/2)

##### PART NO.

660401001	1 Section*
660401002	2 Sections*
660401003	3 Sections*
660401004	4 Sections*
660401005	5 Sections*

\*Number of Work Sections

##### PART NO.

660401006	6 Sections*
660401007	7 Sections*
660401008	8 Sections*
660401009	9 Sections*
660401010	10 Sections*

**SPECIAL INLET AND OUTLET SECTIONS AVAILABLE:** Sections other than standard models listed can be made to order. Use order code Matrix below to generate a model number that meets your requirements. If you prefer, contact your Sales Representative with your specific requirements and a model number will be assigned for you. This model number can be used for future orders. A minimum order quantity will apply to special valves. Please consult Sales Representative.

#### INLET SECTIONS

All inlet sections have top and side inlets.

S V I X X - X X X X

##### PORT SIZE

1. #8 SAE ORB (3/4-16 THD)
2. #10 SAE ORB (7/8-14 THD)

##### RELIEF SETTING (in PSI)

##### RELIEF OPTION

1. No Relief Plug
4. Adj. Low Pressure 500-1500 PSI
5. Adj. High Pressure 1500-3000 PSI
6. Plastic Plug in relief cavity. Use only when cartridge is to be installed at a later date.

#### OUTLET SECTION

All outlet sections have top and side outlets.

S V E X X

##### PORT SIZE

1. #8 SAE ORB (3/4-16 THD)
2. #10 SAE ORB (7/8-14 THD)

##### EXHAUST OPTION

1. Std. Open Center Outlet w/Conversion Plug
2. Power Beyond Outlet w/#8 SAE Beyond Port
3. Closed Center Outlet<sup>0</sup>
6. Open Center Outlet Pressure Build-up
7. Power Beyond Pressure Build-up #8 SAE Beyond Port

<sup>0</sup> Often used with no relief. Review application

## VALVE ASSEMBLIES

The Model SV sectional body directional control valve can be ordered as separate sections or as a complete factory tested assembly. This will need to be specified with each order. An assembly number will be assigned at the time of the order. This assembly number can then be used for future orders.

#### ASSEMBLY MODEL NUMBER SVA-XXXX

XXXX = Sequence of Numbers. This number will be assigned to final valve to be assembled and tested at the factory. Each new order or quote will be assigned a new assembly model number. Please use quotation sheet at the end of SV section.

## SPECIAL WORK SECTIONS AVAILABLE:

Work Sections other than standard models listed can be made to order. Use order code Matrix below to generate a model number that meets your requirements. If you prefer, contact your Sales Representative with your specific requirements and a model number will be assigned for you. This model number can be used for future orders. A minimum order quantity will apply to special valves. Please consult Sales Representative.

## WORK SECTIONS

### SECTION TYPE

W-Std. Work Section  
M-Metering Work Section<sup>2</sup>  
L-Work Section with Double P.O. Checks<sup>1</sup>  
F-Fine Metering<sup>3</sup>

### PORT SIZE

1. #8 SAE ORB (3/4-16 THD)  
2. #6 SAE ORB (9/16-18 THD)

### SPOOL TYPE

A-3-Way 3-Position  
B-4-Way 3-Position  
C-4-Way 3 Position Motor  
D-4-Way 4 Position Float  
E-4-Way 3 Position Metering (SVM only)  
F-3-Way 3 Position Metering (SVM only)  
J-4-Way 3 Position Fine Metering (SVF only)  
1. Lock Valve Section available only with Spool Option C.  
2. Metering Section available only with Spool Options E or F.  
3. Fine Metering available only with Spool Options J.

S V X X X X X

### HANDLE OPTION

1. Standard Lever Handle  
2. Less Handle Only  
3. Less Complete Handle Assembly  
4. Adjustable Handle  
5. Tang Spool End Only  
6. Clevis Spool End Only  
7. Vertical Handle  
8. Straight Handle  
9. Blank for Optional Joystick Handle  
11. Enclosed Handle  
12. Extended Enclosed Handle

### SPOOL ACTION

A-Spring Center (SVW & SVL only)  
B-3 Position Detent  
C-Friction Detent  
D-Spring Center w/Float Detent (SVW only)  
E-Light Spring Center  
F-2 Position Detent Neutral and Out (No IN Position)  
G-2 Position (Center and Spool Out) - Spring Loaded to Spool Out (Pressure to B Port) Position  
H-2 Position (Center and Spool In)-Spring Loaded to Spool In (Pressure to A Port) Position  
J-S/C with MicroSwitch Bracket 2-Position (MicroSwitch not provided)  
K-S/C with MicroSwitch Bracket 1-Position (MicroSwitch not provided) (activates on spool out only)  
M-Spring Center Detent In  
N-Spring Center Detent Out  
R-Spring Center Pneumatic Actuator  
S-Spring Center (SVM & SVF)

## PORT RELIEF WORK SECTIONS

### SECTION TYPE

H-Port Relief Section  
R-Port Relief Metering Section<sup>2</sup>  
S-Series Circuit Port Relief Section  
G-Port Relief Fine Metering Section<sup>3</sup>

### PORT SIZE

1. #8 SAE ORB (3/4-16 THD)  
2. #6 SAE ORB (9/16-18 THD)

### SPOOL TYPE

A-3-Way 3-Position  
B-4-Way 3-Position  
C-4-Way 3 Position Motor  
D-4-Way 4 Position Float  
E-4-Way 3 Position Metering (SVR only)  
F-3-Way 3 Position Metering (SVR only)  
G-4-Way 3 Position Series (SVS only)  
H-4-Way 3 Position Motor Series (SVS only)  
J-4-Way 3 Position Fine Metering (SVG only)

### SPOOL ACTION

A-Spring Center (SVH & SVS only)  
B-3 Position Detent  
C-Friction Detent  
D-Spring Center w/Float Detent (SVH only)  
E-Light Spring Center  
F-2 Position Detent Neutral and Out (No IN Position)  
J-S/C with Micro Switch Bracket 2-Position\*  
K-S/C with MicroSwitch Bracket 1-Position\*  
M-Spring Center Detent In  
N-Spring Center Detent Out  
R-Spring Center Pneumatic Actuator  
S-Spring Center (SVR & SVG)

\*MicroSwitch not provided

### HANDLE OPTION

1. Standard Lever Handle  
2. Less Handle Only  
3. Less Complete Handle Assembly  
4. Adjustable Handle  
5. Tang Spool End Only  
6. Clevis Spool End Only  
7. Vertical Handle  
9. Blank for Optional Joystick Handle  
12. Extended Enclosed Handle

S V X X X X X X X

### PORT RELIEF "B" OPTION

A-Relief Cavity Plugged  
B-Non-Adjustable Direct Acting Relief 1500-3000 PSI  
C-Non-Adjustable Direct Acting Relief 500-1500 PSI  
D-Anti-Cavitation Check  
E-Adjustable Combination Port Relief/Anti-Cavitation Check 1000-2500 PSI\*\*\*  
F-Non-Adjustable Combination Port Relief/Anti-Cavitation Check 1000-2500 PSI\*\*\*  
G-Adjustable Direct Acting Relief 1500-3000 PSI  
H-Adjustable Direct Acting Relief 500-1500 PSI

### PORT RELIEF "A" OPTION

A-Relief Cavity Plugged  
B-Non-Adjustable Direct Acting Relief 1500-3000 PSI  
C-Non-Adjustable Direct Acting Relief 500-1500 PSI  
D-Anti-Cavitation Check  
\*\*E-Adjustable Combination Port Relief/Anti-Cavitation Check 1000-2500 PSI\*\*\*  
F-Non-Adjustable Combination Port Relief/Anti-Cavitation Check 1000-2500 PSI\*\*\*  
\*\*G-Adjustable Direct Acting Relief 1500-3000 PSI  
\*\*H-Adjustable Direct Acting Relief 500-1500 PSI  
\*\* Cannot be used on work sections with float option due to interference with handle.  
\*\*\* Do not use in applications that require low work port leakage. Max allowable leakage 5 in<sup>3</sup>/min @1000 psi.

### For Work Port Relief Settings Other Than Standard SVH1BA1GG-18-25

B PORT RELIEF PRESSURE IN HUNDREDS  
EXAMPLE: 25=2500 PSI at 3 GPM  
All Port Reliefs set at 3 GPM

A PORT RELIEF PRESSURE IN HUNDREDS  
EXAMPLE: 18=1800 PSI at 3 GPM  
All Port Reliefs set at 3 GPM

**CUSTOM SECTION:** For OEM application custom sections can often be designed to meet your specifications. Special handles, spool, and spool actions are often easily made because of the SV valve's flexible design. Consult your sales representative with your specifications.

## FIELD CONVERSION KITS, REPAIR KITS AND RELIEF CARTRIDGES

### SPOOL ATTACHMENT KITS

660180001	Spring Center Kit (except SVM)
660180002	3 Position Detent Kit
660180003	Friction Detent Kit
660180051	Float Detent Kit
660180036	Spring Center Detent In
660180037	Spring Center Detent Out
660180015	S/C w/Micro-Switch, 2 Position*
660180016	S/C w/Micro-Switch, 1 Position*

### HANDLE KITS

660180011	Std. Handle Kit
660180032	Clevis Sub-Assy
660180005	Complete Handle Kit
660180031	Pin Kit
660180026	Vertical Handle Kit
660180028	Straight Handle Kit
660180007	Complete Adjustable Handle Kit

\*Bracket only, Micro-Switch is not provided.

660180006	Adjustable Handle Kit
660180055	Joystick Handle Kit Less Handle
660180033	Bent Joystick Handle Kit
660180017	Straight Joystick Handle Kit
660180018	Offset Joystick Handle Kit

### SEAL KITS

660580001	SVW/SVM Replacement Seal Kit
660580002	Inlet Seal Kit
660580003	Outlet Seal Kit
660580004	Between Section Seal Kit
660580010	SVH/SVR Replacement Seal Kit
660580009	SVL Replacement Seal Kit
660580011	SVS Replacement Seal Kit

### PORT RELIEFS

660280004	Port Relief Plug
660280003	Shim Adj. Port Relief 1500-3000 PSI
660280010	Shim Adj. Port Relief 500-1500 PSI
660280012	Adj. Combination Port Relief/Anti-Cav Check 1000-2500 PSI

660280008	Shim Adj. Combination Port Relief/Anti-Cav Check 1000-2500 PSI
660280005	Anti-Cavitation Check
660280009	Adj. Port Relief 1500-3000 PSI
660280011	Adj. Port Relief 500-1500 PSI
672000101	.015 SHIM
672000102	.033 SHIM
672000103	.060 SHIM

### INLET RELIEFS

660250006	Inlet Relief Plug
660250003	Low Pressure Inlet Relief
660250002	High Pressure Inlet Relief

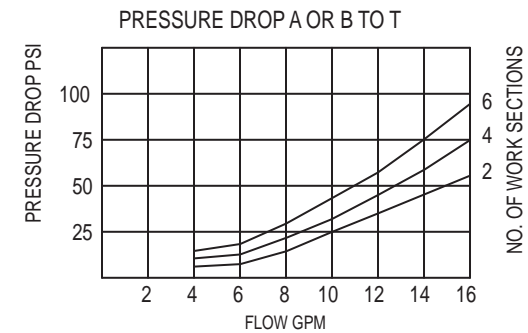
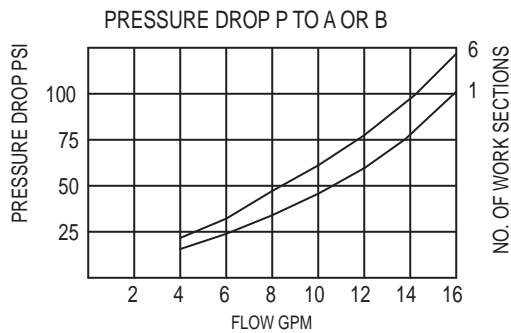
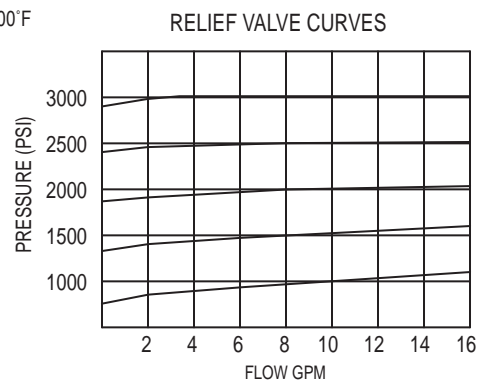
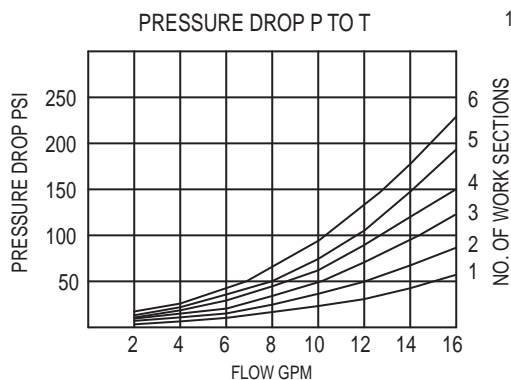
### OUTLET CARTRIDGES

200400030	Open Center Plug
660280001	#8 SAE Power Beyond Cart.
660280002	Closed Center Plug
660280018	Open Center Build-Up Cart.
660280019	Power Beyond Build-Up Cart.

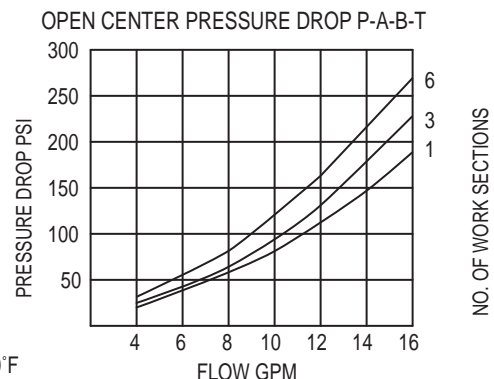
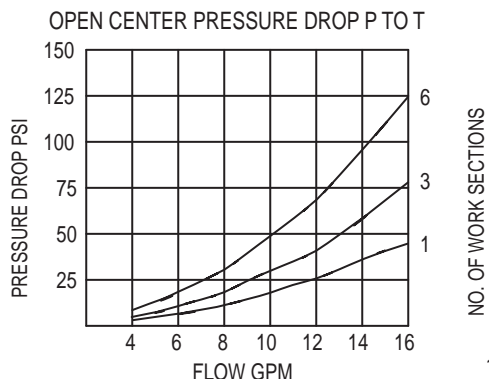
### MISC. KITS

660180052	Load Check Kit
-----------	----------------

## PERFORMANCE CURVES

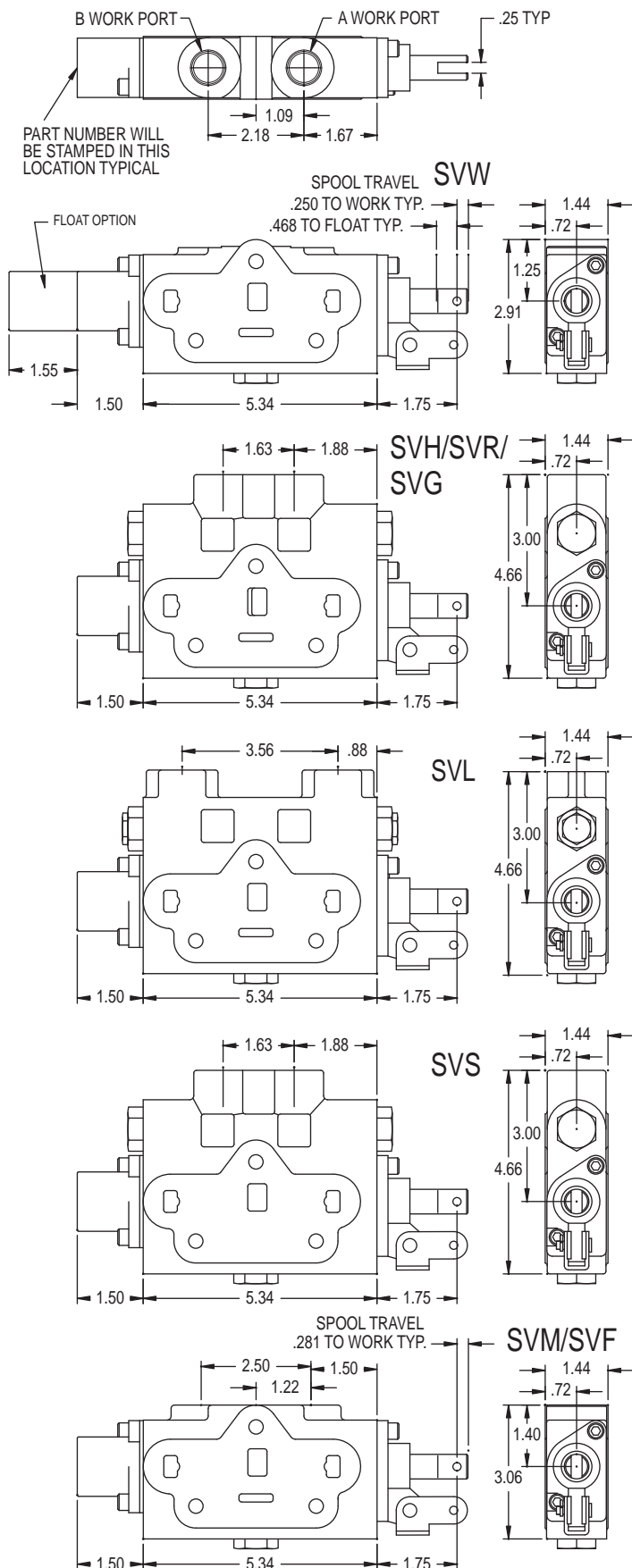


## SVS SERIES SECTION TEST DATA

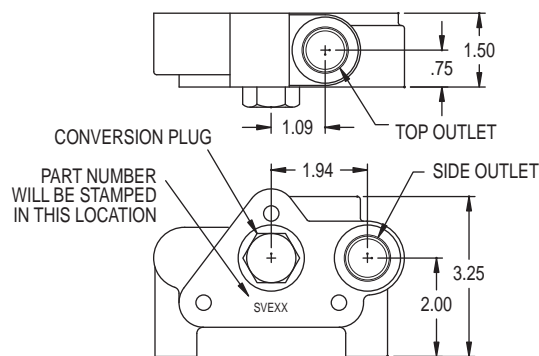


# DIMENSIONAL DATA

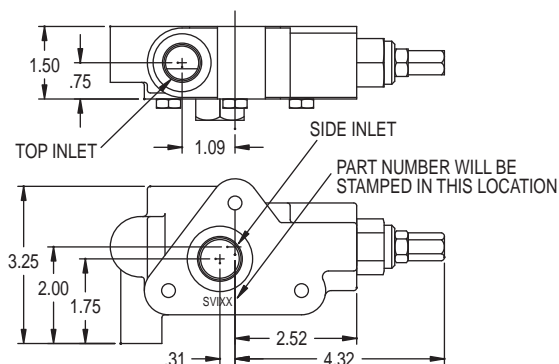
## WORK SECTIONS



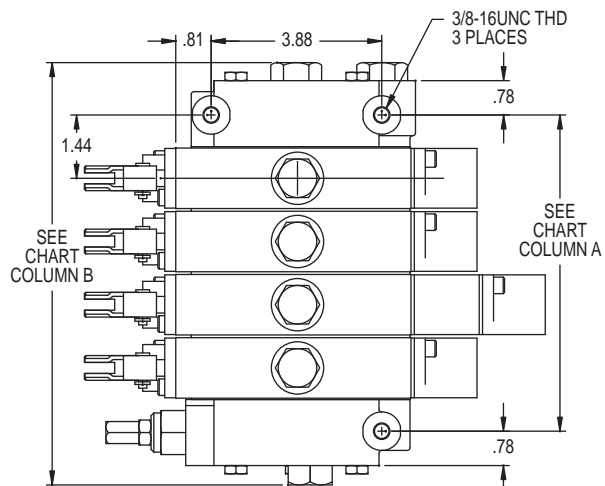
## OUTLET COVER



## INLET COVER



## BOTTOM VIEW OF MOUNTING DIMENSIONS



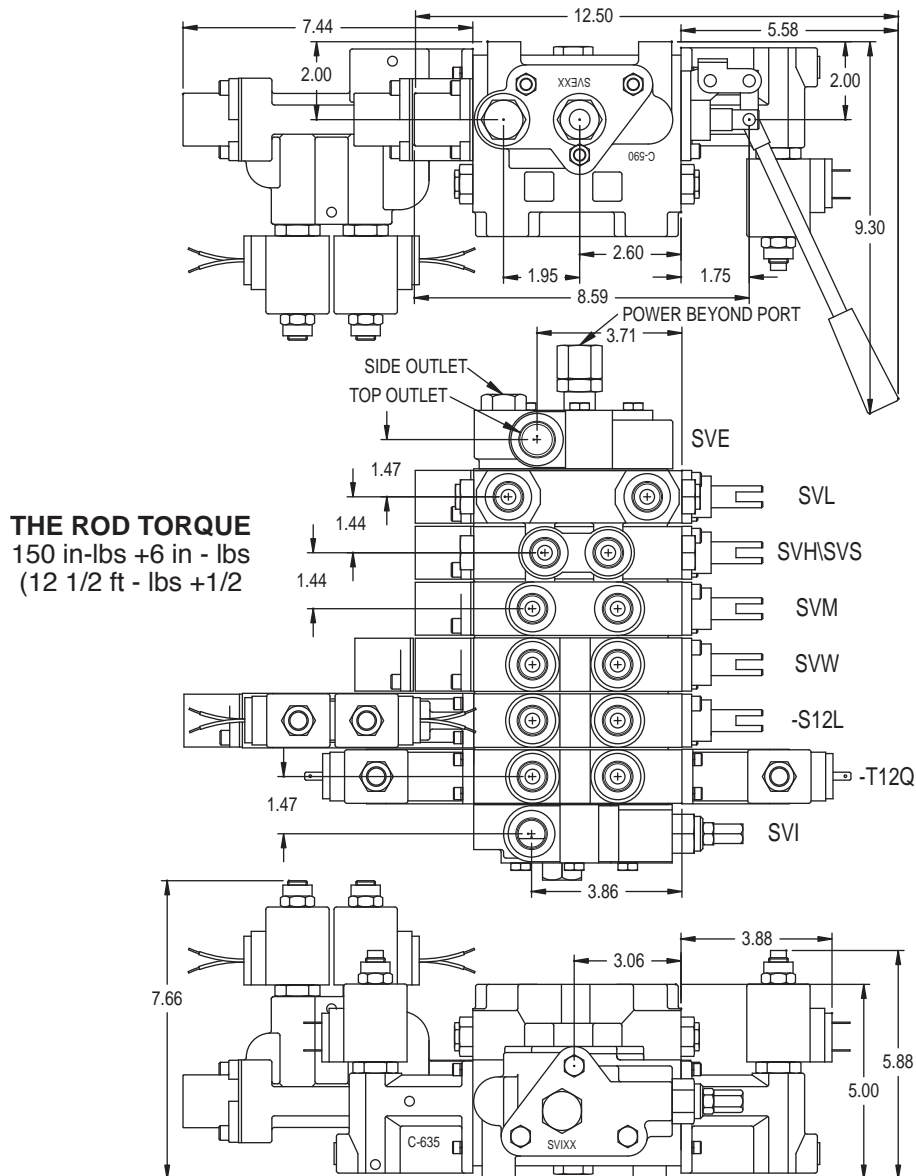
Number of Work Sections "A" "B"

Number of Work Sections	"A"	"B"
1	2.875	5.875
2	4.312	7.312
3	5.750	8.750
4	7.187	10.187
5	8.625	11.625
6	10.062	13.062
7	11.500	14.500
8	12.937	15.937
9	14.375	17.375
10	15.812	18.812

\*With #10 plug in inlet & power beyond in outlet.



## TYPICAL STACK DIMENSIONAL DATA



## ENCLOSED HANDLE, OPTIONS 11 AND 12

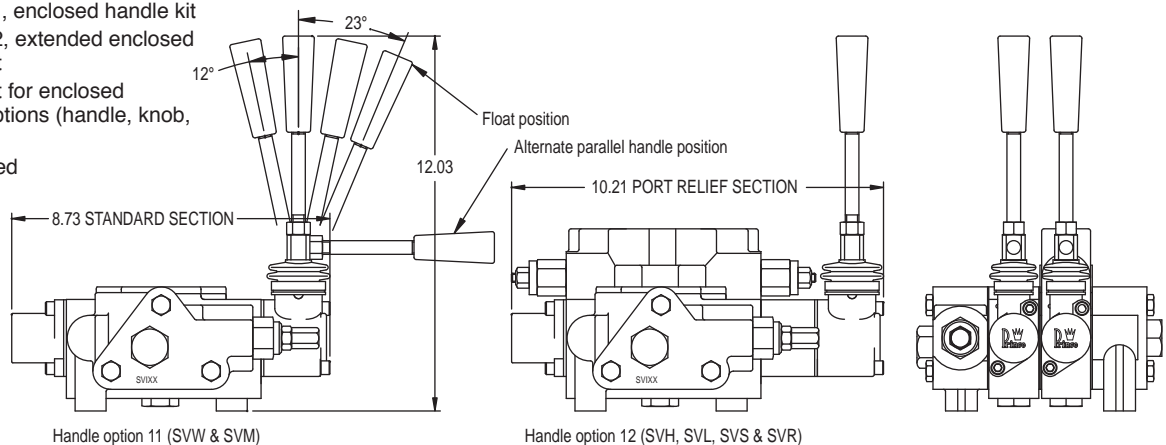
Durable die cast metal housing. Weather and oil resistant rubber boot. Reversible handle can be mounted in either a vertical or horizontal position. The extended handle option provides the necessary clearance for work port relief and lock cartridges. The extended handle option can also be used on the SVW and SVM, work sections when it is desired to keep handles aligned in an assembly with both low and high sections.

660180149 = Option 11, enclosed handle kit

660180151 = Option 12, extended enclosed handle kit

660180150 = handle kit for enclosed handle options (handle, knob, hex nut)

(handle kit is not included in the Option 11 or 12 kits above)



## PARALLEL CIRCUIT SVW, SVM, SVF, SVH, SVR, SVG AND SVL WORK SECTIONS

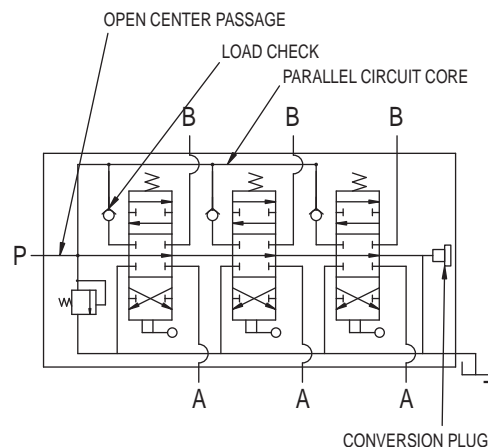
Parallel circuit sections are by far the most common. The SVW, SVM, SVF, SVH, SVR, SVG and SVL are all of parallel circuit construction. They can be combined together in any order in an assembly. When any one of the spools is shifted, it blocks off the open center passage through the valve. The oil then flows into the parallel circuit core making oil available to all spools. If more than one spool is fully shifted, the oil will go to the spool with the lowest pressure requirements. However, it is possible to meter the flow to the spool with the least load and provide flow to two unequal loads.

### ENHANCED METERING SECTIONS

The SVM, SVF, SVR and SVG sections have metering notches machined into the spool to allow for better "feathering" of a load. The spool travel for these sections is also a little longer at .281" vs. .250" for the standard sections. In addition to the metering notches in the spool, the lands in the SVF and SVG bodies have been machined to give more precise control over the flow. The metering notches in the SVF and SVG have been optimized for flows of 10 gpm or less. For enhanced metering on higher flows, it is recommended that the SVM or SVR be used.

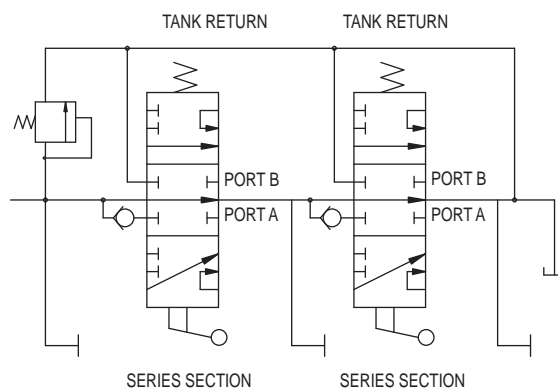
### LOCK SECTIONS

The SVL section combines both a 4-way directional valve and a double pilot operated check valve. This provides very low leakage when the spool is in neutral. When the spool is shifted, oil is directed through a work port check to the cylinder. Pressure on the work port applies pressure to the shuttle spool, opening the opposite check valve and allowing oil to return into the valve. Depending on load pressures, the metering of the spool may be affected. In some cases a one way restrictor in a work port may be beneficial.



## SERIES CIRCUIT SVS WORK SECTIONS

A series circuit valve is most commonly used to control more than one hydraulic component simultaneously. The entire circuit flow is available to each valve section that is actuated. In a two spool series valve with both spools actuated, the oil flows from the inlet to the work port of the first section. The return flow of the first section is directed to the open center core of the second section. (In a parallel valve the return oil from the work port is directed to the tank core.) From the open center core of the second section, the oil flows to the work port with the return oil going to the outlet. In a series circuit valve, the summation of the pressures required for each work section will equal the total pressure required for the circuit. The total pressure required must not exceed the system relief setting or the pump pressure rating. It is not required to have a SV Series section as the last section, unless series flow is required to a downstream valve. In this application, a power beyond plug must be used in the outlet section.



### COMBINED SERIES / PARALLEL CIRCUITS

The SV Series circuit valve sections may be stacked with SV parallel circuit valve sections. This allows both series and parallel control in the same valve assembly.

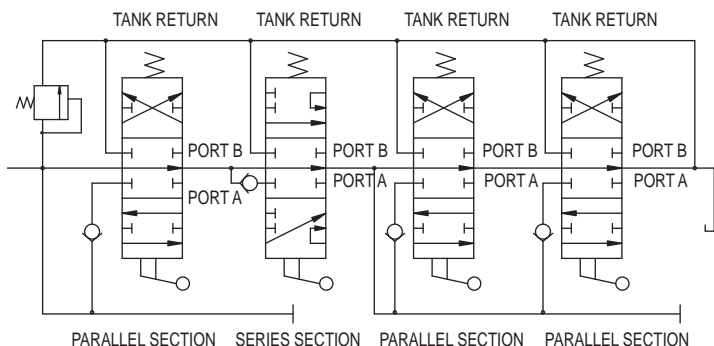
In the valve assembly shown below, the first, third and fourth sections are parallel. The second section is series. The first parallel section has priority over all downstream valves. When the spool of the first parallel section is actuated, the return oil from the work port is directed to the tank core, thus oil flow to downstream sections is cut off. The second and third sections are in series with each other as is the second and fourth sections. The third and fourth sections are in parallel with each other.

### SERIES MOTOR SPOOL

The SV Series Motor Spool provides control of reversible hydraulic motors. Both work ports are connected to the open center core in the neutral position. It should be noted that in the neutral position, the work ports will be equally pressurized to the same pressure that is required of any downstream valve sections and that a work port relief in the section will also limit the pressure of any other sections in the valve. The series motor spool should not be used to control a hydraulic cylinder as unwanted cylinder drift may occur in the neutral position.

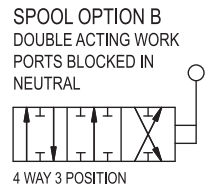
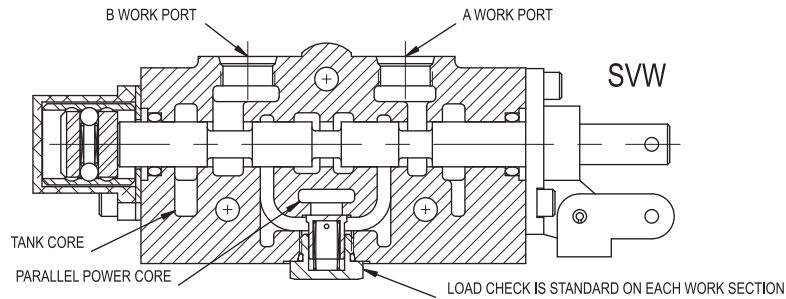
### CLOSED CENTER APPLICATIONS

The SV Series Circuit Valve sections cannot be used in a closed center valve assembly.

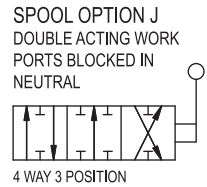
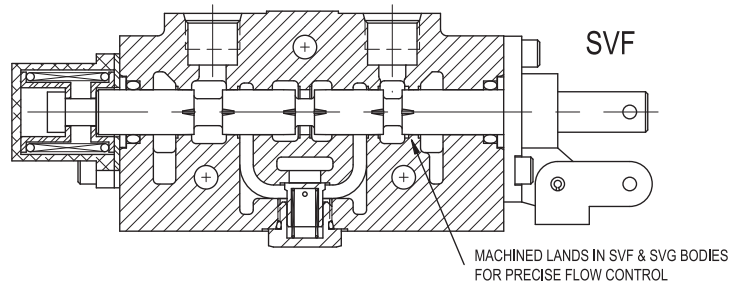


# WORK SECTIONS

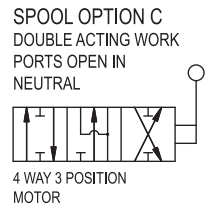
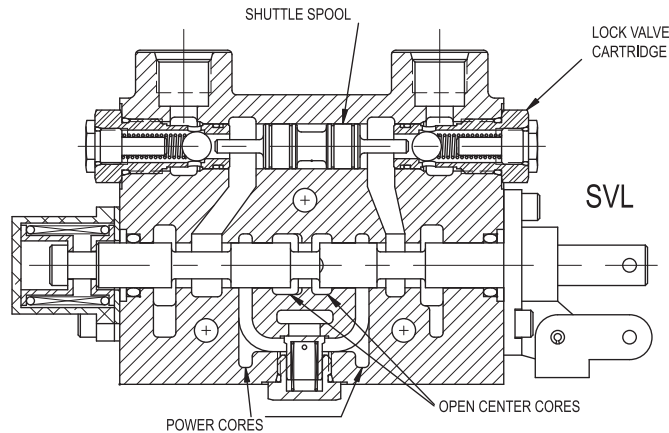
**SPOOL ATTACHMENT OPTION B**  
3 POSITION DETENT



**SPOOL ATTACHMENT OPTION S**  
SPRING CENTER (FINE METERING)

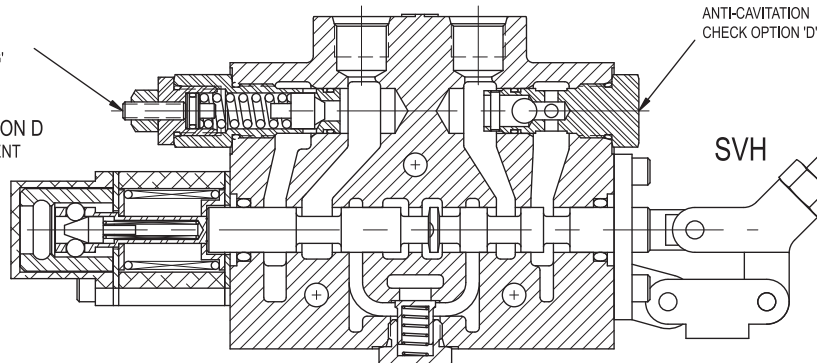


**SPOOL ATTACHMENT OPTION A**  
SPRING CENTER

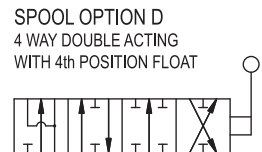


**SPOOL ATTACHMENT OPTION D**  
SPRING CENTER W/FLOAT DETENT

ADJUSTABLE DIRECT  
ACTING RELIEF OPTION 'G'

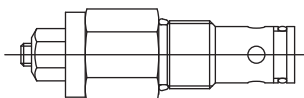


ADJUSTABLE HANDLE  
OPTION 4



## SV WORK PORT RELIEF

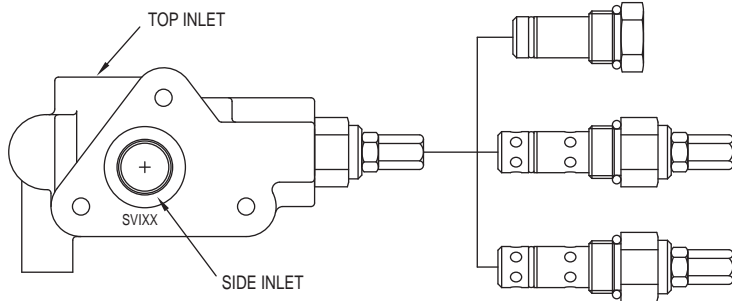
SV WORK PORT RELIEFS, OPTION B, C, G, & H CAN BE ORDERED PRETESTED. USE ORDER CODE AT RIGHT



PR	-	0	-	
MODEL NUMBER	PORT SIZE	RELIEF TYPE	PRESSURE SETTING	
	0 CARTRIDGE ONLY	H- ADJUSTABLE 1500-3000 PSI L- ADJUSTABLE 500-1500 PSI NH- NON-ADJUSTABLE 1500-3000 PSI NL- NON-ADJUSTABLE 500-1500 PSI	SPECIFY RELIEF PRESSURE. LEAVE BLANK FOR STANDARD SETTINGS.  <b>STANDARD SETTING:</b> 2000 PSI for H and NH 1000 PSI for L and NL	



## SV INLET RELIEF OPTIONS



### OPTION 1 NO RELIEF

This option provides no built in relief. This is used when a relief is provided elsewhere in the system or in a closed center application. This plug can be replaced with a relief cartridge at a later date.

### OPTION 4 LOW PRESSURE ADJUSTABLE RELIEF

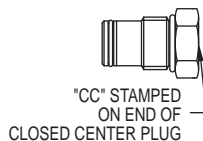
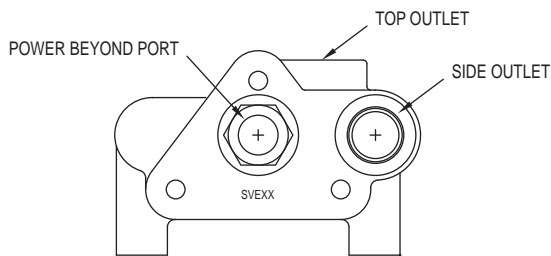
This option provides for a differential poppet relief adjustable from 500-1500 PSI. Set at 1000 PSI @ 10 GPM.

### OPTION 5 HIGH PRESSURE ADJUSTABLE RELIEF

This option provides for a differential poppet relief adjustable from 1500-3000 PSI. Set at 2000 PSI @ 10 GPM. The differential poppet relief provides smooth quiet operation with high cracking pressure.

RELIEF CARTRIDGES CAN BE ORDERED PRETESTED SEE RV-OX RELIEF, PAGE V65.

## SV OUTLET COVER OPTIONS



### OPTION 3 CLOSED CENTER OUTLET

This option provides for closed center operation. This is typically used with a variable displacement pressure compensated pump or in a system with an unloading valve. When the spools are in neutral the inlet port is blocked. Closed center can also be accomplished by plugging the power beyond port of option 2.

**PLEASE NOTE** that this closed center option does not provide for the drain off of standby spool leakage. This can allow a very small amount of oil to enter the work ports when in neutral.

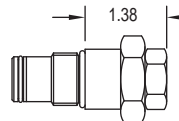
### OPTION 1 STANDARD OPEN CENTER OUTLET WITH CONVERSION PLUG

This is the standard outlet option. This option allows for conversion in the field for power beyond or closed center applications. When spools are in neutral the inlet is unloaded to tank.



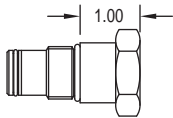
### OPTION 6 OPEN CENTER OUTLET PRESSURE BUILD-UP VALVE FOR SOLENOID OPTION

This option directs oil from open center core thru pressure build-up valve and then to tank. See solenoid section for description of operation.



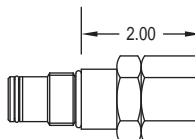
### OPTION 2 POWER BEYOND OUTLET WITH #8 SAE BEYOND PORT

This option provides for a high pressure power beyond port. This would be used if a valve is to be added down stream. THE OUTLET PORT MUST STILL BE CONNECTED TO TANK. When spools are in neutral the inlet is connected to the power beyond port.

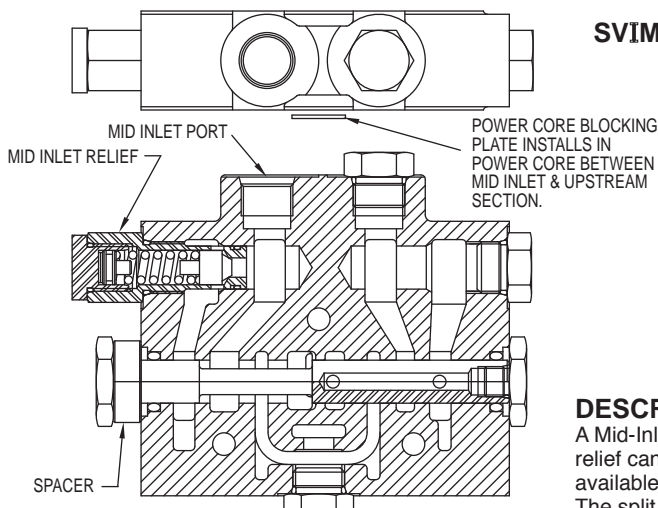


### OPTION 7 POWER BEYOND PRESSURE BUILD-UP VALVE FOR SOLENOID OPTION

This option directs oil from inlet thru pressure build-up valve and then downstream. This pressure build-up valve provides a #8 SAE power beyond port. The outlet must be connected to tank.



## SV MID-INLET SECTION



SPLIT MID-INLET SHOWN CAN BE CONVERTED TO COMBINED MID-INLET BY MOVING SPACER TO OPPOSITE END

SVIM 1 X X - X X X X

Last Four Digits Specify A Non-Standard Relief Pressure. When blank, refer to standard setting

- 1-No Relief
- 2-SHIM Adjustable 500-1500 PSI Std. Setting 1000 PSI @ 10GPM
- 3-SHIM Adjustable 1500-3000 PSI Std. Setting 2000 PSI @ 10 GPM
- 4-Adjustable 500-1500 PSI Std. Setting 1000 PSI @ 10 GPM
- 5-Adjustable 1500-3000 PSI Std. Setting 2000 PSI @ 10 GPM

C-Combined Flow Mid-Inlet  
S-Split Flow Mid-Inlet (not available after a series section)  
See Section View at left. Note Location of Spacer, Part Number 671200035

1. Port Size #8 SAE ORB (3/4-16 THD)

### DESCRIPTION:

A Mid-Inlet provides an inlet port for a second pump mid stream in the valve stack. A relief can be provided in this section. With the combined flow the flow from both pumps is available to the downstream sections when all the work sections upstream are in neutral. The split flow completely separates the two pump flows. The common tank passage is all that is shared between the two pump flows. **Note:** Split flow mid inlet is not available when used after a series section and the core block plate is not used after a series section.

## SV FLOW CONTROL INLET SECTION

### PORT SIZE

- 1- Side and End Inlet #10 SAE ORB
- 2- Side and End Inlet #10 SAE ORB, with #8 SAE ORB External EF Circuit

### RELIEF VALVE

- 1- No Relief
  - 2- Direct acting non-adjustable 500-1500 psi set at 1000 psi\*
  - 3- Direct acting non-adjustable 1500-3000 psi set at 2000 psi\*
  - 4- Direct acting adjustable 500-1500 psi set at 1000 psi\*
  - 5- Direct acting adjustable 1500-3000 psi set at 2000 psi\*
- \*for other settings please specify, i.e. SVIF15P12Q-2700 is set at 2700 psi

### SOLENOID OPTION

- Omit for Flow Control Option M
- 12Q-12VDC Double Spade Coil
  - 24Q-24VDC Double Spade Coil
  - 12H-12VDC DIN 43650 Coil
  - 24H - 24VDC DIN 43650 Coil
  - 12L-12VDC Double Lead Wire Coil
  - 24L - 24VDC Double Lead Wire Coil
  - 12W -12VDC Double Lead Wire w/ Weatherpak Connector Coil
  - 24W - 24VDC Double Lead Wire w/ Weatherpak Connector Coil

### FLOW CONTROL OPTION

- M- Manual Flow Control
- P- Electro-Proportional
- U- Solenoid Unloading

The SVIF Flow Control Inlet is interchangeable with the standard SV inlet section.

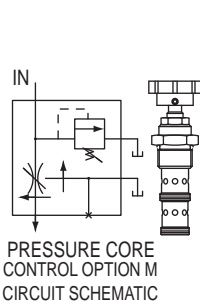
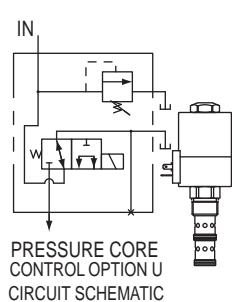
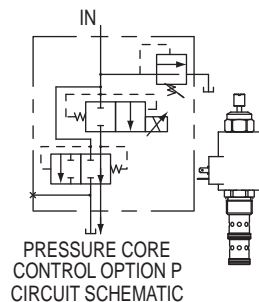
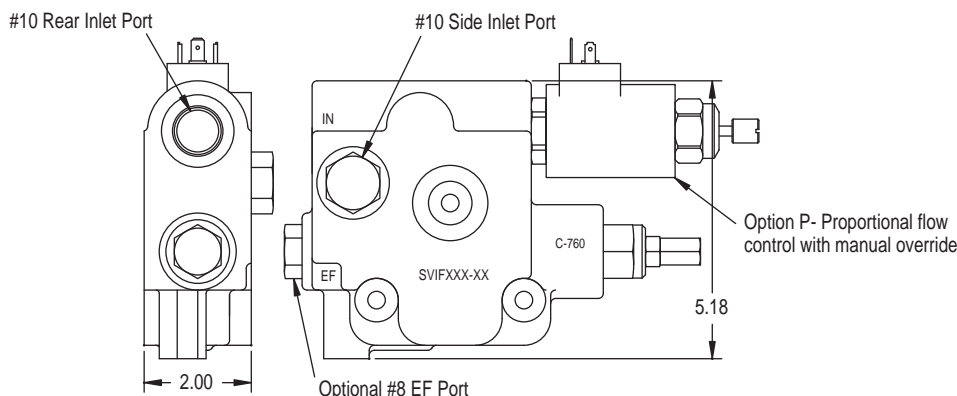
### FLOW CONTROL OPTIONS:

P OPTION incorporates a solenoid operated, electrically variable pressure-compensated flow control cartridge. With the solenoid de-energized, all of the inlet flow is diverted to the tank core/EF port. By increasing the current through the solenoid, the flow directed to the power core and downstream sections will be proportionally increased, (the maximum rating of the cartridge is 16 gpm at 1500 mA) Control current is normally provided via a controller card providing, a PWM signal.

U OPTION incorporates a solenoid operated, unloader cartridge. With the solenoid de-energized, all of the inlet flow is diverted to the tank core/EF port. With the solenoid energized all the inlet flow is directed to the power core and downstream sections.

M OPTION incorporates a manually operated pressure-compensated flow control cartridge. With the control knob turned fully in (clockwise), all of the inlet flow is diverted to the tank core/EF port. By turning the flow control knob counter clockwise, the inlet flow directed to the power core and downstream sections is proportionally increased. Approximately 5 revolutions varies flow from no flow to full flow,

PORT OPTION 2 The flow being directed to the tank core/EF port may be utilized by a second circuit by inserting a 1/4 pipe plug into the tank core passage on the seal side of the casting and then connecting the EF port to the second circuit.

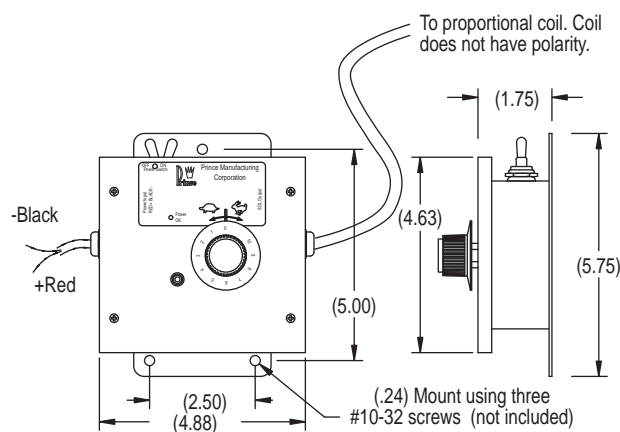


## PROPORTIONAL CONTROLLER BOX (for use with SVIFP flow control inlet), PART NO. 671300048

The proportional controller box is used to provide an adjustable electrical signal to a proportional solenoid on the SVIFP inlet. Once the dial is set, the regulated flow through the valve should remain approximately constant regardless of pressure. Within the operating range, flow varies approximately linearly with dial rotation.

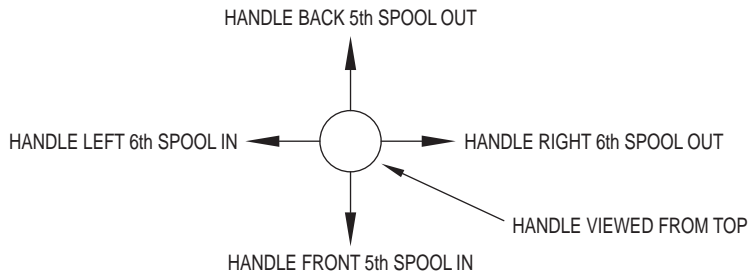
### CONNECTIONS AND OPERATION:

- \*Connect leads to the power supply and solenoid. Power supply should be between 9 and 32 VDC.
- \*With the power off, the inlet flow is directed to the tank (or excess flow port).
- \*To provide power to the control, move the power switch to ON. (Green LED is ON when control is powered).
- \*Minimum flow is directed into the valve when 0 on the dial is aligned with the center mark. Maximum flow is directed into the valve when 10 on the dial is aligned with the center mark.
- \*Clockwise rotation increases flow.
- \*Typically, no adjustments are needed for operation, (I-min and I-max pots are preset for the normal maximum and minimum flows)



Control comes with 6 ft of cable for power leads and 6 ft of cable for coil leads. Control box protection rating is IP67.

## JOYSTICK HANDLE FOR MODEL SV STACK VALVE



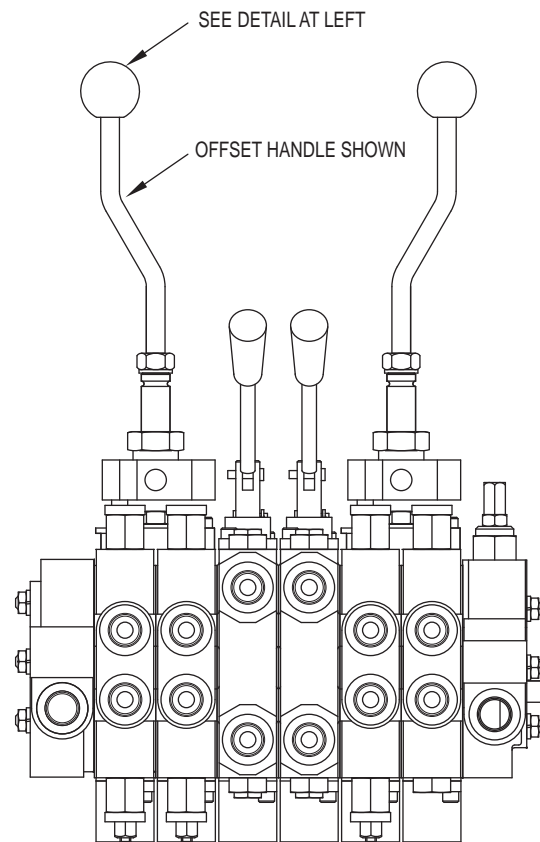
This is a special handle for the model SV stack valve that allows the spools of two adjacent sections to be operated by one common handle. The spools can be operated independently or simultaneously depending on handle movement. The option is normally used on spring center to neutral sections, but can also be used on other sections such as float sections. This handle is normally installed on valves assembled at the factory but can be installed on work sections that have handle option 3 or 9. The drawing at right shows two joysticks with offset handles installed on a six section valve. When two joysticks are installed on the same valve assembly it is recommended that there be two standard sections between them to prevent handle interference. A two section spacer is available, part no. 660380002.

Please refer to these part numbers and state which sections the handle is to be installed on when ordering a valve assembly. This handle can be installed in the field to work sections with handle option 3 (no handle).

JOYSTICK ASSEMBLY W/STRAIGHT HANDLE:  
ASSEMBLED ON VALVE .....SVJS  
KIT ..... 660180017

JOYSTICK ASSEMBLY W/OFFSET HANDLE:  
ASSEMBLED ON VALVE .....SVJO  
KIT ..... 660180018

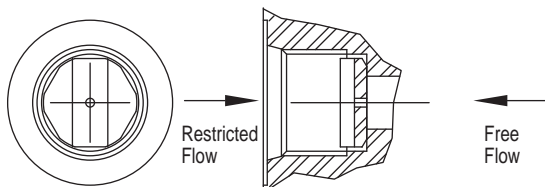
JOYSTICK ASSEMBLY W/BENT HANDLE:  
ASSEMBLED ON VALVE .....SVJB  
KIT ..... 660180033



A molded rubber boot (671300011) is available for the joystick.

### ONE WAY WORK PORT RESTRICTOR FOR SVH, SVM, SVR, & SVL WORK SECTIONS

This restrictor will restrict oil in one direction and allow free flow in the opposite direction. This restrictor consists of an orifice plate that simply drops into the #8 SAE work port of a SVH, SVM, SVR, & SVL work section.



#### ORDERING INFORMATION

HEX BRASS RESTRICTOR

#6 SAE 9/16-18	#8 SAE 3/4-16
670806XXX	670805XXX

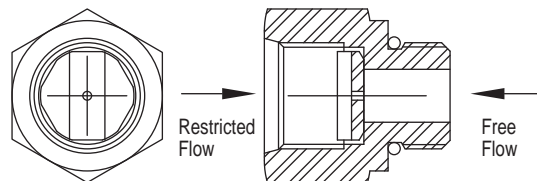
SQUARE STEEL RESTRICTOR	661181XXX
CONICAL SPRING	

The last three digits of part number are the orifice size in thousandths of an inch. **EXAMPLE:**

#6 SAE 9/16-18THD	#8 SAE 3/4-16THD	
670806062	670805062	.062 ORIFICE
670806125	670805125	.125 ORIFICE
670806000	670805000	NO ORIFICE

### ONE WAY WORK PORT RESTRICTOR FOR SVW WORK SECTIONS

This restrictor will restrict oil in one direction and allow free flow in the opposite direction. This restrictor consists of the orifice plate as described at left and an adapter fitting that allow use in the standard SVW #8 SAE work port.



#### ORDERING INFORMATION

ADAPTER W/HEX BRASS RESTRICTOR

#6 SAE 9/16-18	#8 SAE 3/4-16
661280XXX	661180XXX

ADAPTER WITH SQUARE STEEL	661182XXX
RESTRICTOR AND CONICAL SPRING	

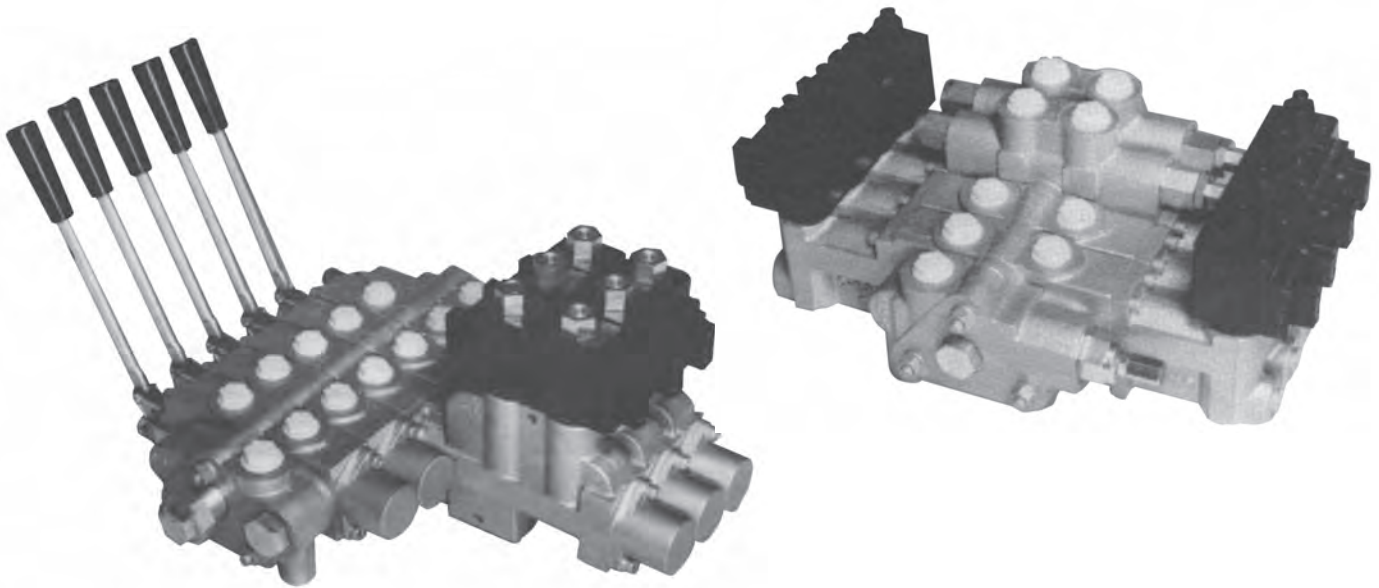
The last three digits of part number are the orifice size in thousandths of an inch. **EXAMPLE:**

#6 SAE 9/16-18THD	#8 SAE 3/4-16THD	
661280062	661180062	.062 ORIFICE
661280125	661180125	.125 ORIFICE
661280000	661180000	NO ORIFICE

# Directional Control Valves

## SV SOLENOID OPERATED Work Sections

- Type “-T” Solenoid Operated
- Type “-S” Solenoid and Manual Operation



VALVES

### STANDARD FEATURES

- Open center or closed center applications
- Port relief options available
- Internal pilot supply and drain
- 12VDC, 24VDC and 120VAC
- Power beyond capability
- Load checks on each section
- May be stacked with Manual SV Sections

### SPECIFICATIONS

#### Parallel or Series Circuit Construction

##### Pressure Rating

Maximum Operating Pressure ..... 3000 psi

Maximum Tank Pressure ..... 150 psi

**Nominal Flow Rating** ..... 12 GPM

##### Differential Pressure

**Required to Actuator** ..... **Approx. 150 PSI**

**Filtration:** For general purpose valves, fluid cleanliness should meet the ISO 4406 19/17/14 level. For extended life or for pilot operated valves, the 18/16/13 fluid cleanliness level is recommended.

#### Foot Mounting

**Maximum Operating Temp.** ..... 180°F

##### Weight Per Section

Inlet Section ..... Approx. 3.75 lbs.

Outlet Section ..... Approx. 3.75 lbs.

##### Solenoid Operated

Type “-T” Work Section ..... Approx. 11.0 lbs.

Type “-S” Work Section ..... Approx. 14.5 lbs.



## TYPE “-T” SOLENOID DESCRIPTION OF OPERATION

**The Type “-T” Solenoid Operated SV Work Section** allows remote electrical on-off control. This solenoid operated SV section may be assembled with other standard SV manual sections, or type “-S” solenoid and manual sections.

**The Type “-T” Solenoid Operated SV Section contains** two 3-way 2-position solenoid cartridge valves, one at each end of the main valve body. When both solenoids are de-energized, both ends of the control valve spool are open to tank pressure and the spool remains spring centered. When solenoid “A” is energized, pilot pressure is applied to one end of the control valve spool causing the spool to shift from neutral to full stroke on “A” work port. When solenoid “B” is energized, pilot pressure is applied to the other end of the control valve spool causing the spool to shift to full stroke on “B” work port.

**Internal pilot lines** provide pilot pressure to the solenoid actuators. Pilot pressure is generated by a “Pressure Build-Up Valve” that is installed in the standard outlet section. Two versions of the pressure build-up valve are offered. The open center pressure build-up valve and the power beyond pressure build-up valve. Both versions supply 150-200 PSI pilot pressure to the solenoid actuators.

## TYPE “-S” SOLENOID AND MANUAL DESCRIPTION OF OPERATION

**The Type “-S” Solenoid and Manual Operated SV Work Section** allows remote electrical on-off or manual control. This solenoid operated SV section may be assembled with other standard SV manual sections, or type “-T” solenoid sections.

**The Type “-S” Solenoid and Manual Operated SV Section contains** two, 3-way 2-position solenoid cartridge valves and a pilot operated piston attached to the main control spool. When both solenoids are de-energized both sides of the pilot piston are open to tank pressure and the spool remains spring centered. When solenoid “A” is energized, pilot pressure is applied to one side of the pilot piston causing the spool to shift from the neutral position to work port “A”. When solenoid “B” is energized, pilot pressure is applied to the other side of the pilot piston causing the spool to shift to work port “B”.

**Internal pilot lines** provide pilot pressure to the solenoid actuator. Pilot pressure is generated by a “Pressure Build-Up Valve” that is installed in the standard outlet section. Two versions of the pressure build-up valve are offered. The open center pressure build-up valve and the power beyond pressure build-up valve. Both versions supply 150-200 PSI pilot pressure to the solenoid actuator.

## APPLICATION INFORMATION

**For over center or light load applications** if the required work port load pressure drops below 200 PSI, the pilot pressure to the spool will drop to the same pressure causing the spring to move the control spool back towards the neutral position. The spool will end up in an intermediate position between neutral and fully shifted. **A restrictor installed in the work port or line may be required for this type of application.**

**For closed center applications** the Pressure Build-Up Valve is not required. However, a system pressure of 200 PSI must be maintained in the closed center position to actuate the valve properly.

Proper operation of the solenoid actuators requires a pressure differential of 150-200 PSI above tank pressure. **The maximum tank port pressure should not exceed 150 PSI.** Excessive tank pressure will increase “Seal Drag” and may prohibit, the spool from shifting.

The solenoid operated SV section may be converted to accept an external hydraulic pilot supply to the solenoid actuators. Please consult a Sales Representative for information.

## On Line Information Available

Additional valve information is available on line at [www.princehyd.com](http://www.princehyd.com)  
Information available includes:

- Parts manuals for many common Prince valves.
- CAD drawing files for many common Prince valves.
- Instruction sheets.
- Updated Prince catalog pages.
- Prince catalog in electronic format.



## ORDERING INFORMATION:

The following is a listing of valve sections available from stock on a standard basis.

### STANDARD SECTIONS AVAILABLE:

#### SOLENOID OPERATED SVW WORK SECTIONS ALL HAVE #8 SAE PORTS AND LOAD CHECK

**PART NO.**

SVW1BA-T12Q

SVW1AA-T12Q

SVW1CA-T12Q

SVW1BA-T11C

**SPOOL TYPE/VOLTAGE**

4 WAY-3 POSITION/12 VDC

3 POSITION/12 VDC

4 WAY-3 POSITION MOTOR/12 VDC

4 WAY-3 POSITION/120 VAC

For Inlets, Outlets and  
Tie-rod Kits, please refer  
to SV Section

#### SOLENOID OPERATED SVH WORK SECTIONS

ALL HAVE #8 SAE PORTS AND LOAD CHECK. MODELS WITH RELIEF, FACTORY SET AT 2000 PSI AT 3 GPM

**PART NO.**

SVH1BAGG-T12Q

SVH1BAAA-T12Q

SVH1CAGG-T12Q

**SPOOL TYPE/VOLTAGE**

4 WAY-3 POSITION/12 VDC

4 WAY-3 POSITION/12 VDC

4 WAY-3 POSITION MOTOR/12 VDC

**PORT RELIEFS**

ADJUSTABLE 1500-3000 PSI

PORT RELIEF PLUGGED

ADJUSTABLE 1500 - 3000 PSI

### SPECIAL SECTIONS AVAILABLE:

Sections other than the standard models listed can be made to order. Use the order code Matrix below to generate a model number that meets your requirements. If you prefer, contact your Sales Representative with your specific requirements and a model number will be assigned for you. This model number can then be used for future orders. A minimum order quantity will apply to special valves. Please contact your Sales Representative.

## SOLENOID OPERATED PORT RELIEF WORK SECTION

SECTION TYPE		SVHXXXX-TXXX		COIL VOLTAGE & TERMINATION *	
H-Port Relief Section				12Q, 12 VDC Double Spade	
S-Series Section (Use G spool)				12L, 12 VDC Double Wire	
				12H, 12 VDC DIN 43650	
				12W, 12 VDC Weather Pack ®	
				24Q, 24 VDC Double Spade	
				24L, 24 VDC Double Wire	
				24H, 24 VDC DIN 43650	
				11C, 120 VAC Conduit	
				11H, 120 VAC DIN 43650	
PORT SIZE				SOLENOID OPERATION	
1. #8 SAE					
SPOOL TYPE					
A-3-Way 3-Position					
B-4-Way 3-Position					
C-4-Way 3-Position Motor					
G-4-Way Series					
SPOOL ACTIONS					
A - Spring Center					
PORT RELIEF "A" OPTION				PORT RELIEF "B" OPTION	
A-Relief Cavity Plugged				A-Relief Cavity Plugged	
B-Non-Adjustable Direct Acting Relief 1500-3000 PSI				B-Non-Adjustable Direct Acting Relief 1500-3000 PSI	
C-Non-Adjustable Direct Acting Relief 500-1500 PSI				C-Non-Adjustable Direct Acting Relief 500-1500 PSI	
G-Adjustable Direct Acting Relief 1500-3000 PSI				G-Adjustable Direct Acting Relief 1500-3000 PSI	
H-Adjustable Direct Acting Relief 500-1500 PSI				H-Adjustable Direct Acting Relief 500-1500 PSI	

## SOLENOID OPERATED SVW AND SVL WORK SECTIONS

SECTION TYPE		SVWXXXX-TXXX		COIL VOLTAGE & TERMINATION *	
W-Standard Work Section				12Q, 12 VDC Double Spade	
L-Lock Section (Use C Spool)				12L, 12 VDC Double Wire	
				12H, 12 VDC DIN 43650	
				12W, 12 VDC Weather Pack ®	
				24Q, 24 VDC Double Spade	
				24 L, 24 VDC Double Wire	
				24H, 24 VDC DIN 43650	
				11C, 120 VAC Conduit	
				11H, 120 VAC Din 43650	
PORT SIZE				SOLENOID OPERATION	
1. #8 SAE					
SPOOL TYPE					
A-3-Way 3-Position					
B-4-Way 3-Position					
C-4-Way 3-Position Motor					
SPOOL ACTIONS					
A - Spring Center					

\* See page V34 for coil details

## ORDERING INFORMATION: “-S” SOLENOID AND MANUAL WORK SECTIONS

The following is a listing of valve sections available from stock on a standard basis.

### STANDARD SECTIONS AVAILABLE:

#### SOLENOID OPERATED SVW WORK SECTIONS ALL HAVE #8 SAE PORTS, LOAD CHECK AND STANDARD LEVER HANDLE

PART NO.	SPOOL TYPE/VOLTAGE
SVW1AA1-S12Q	3 WAY-3 POSITION/12 VDC
SVW1BA1-S12Q	4 WAY-3 POSITION/12 VDC
SVW1CA1-S12Q	4 WAY-3 POSITION MOTOR/12 VDC
SVW1BA1-S24Q	4 WAY-3 POSITION/24 VDC

For Inlets, Outlets and Tie-rod Kits, please refer to SV Section

#### SOLENOID OPERATED SVH WORK SECTIONS ALL HAVE #8 SAE PORTS, LOAD CHECK AND STANDARD LEVER HANDLE MODELS WITH RELIEF, FACTORY SET AT 2000 PSI AT 3 GPM

PART NO.	SPOOL TYPE/VOLTAGE	PORT RELIEFS
SVH1BA1AA-S12Q	4 WAY DOUBLE ACTING/12 VDC	PORT RELIEF PLUGGED
SVH1BA1AA-S24Q	4 WAY DOUBLE ACTING/24 VDC	PORT RELIEF PLUGGED
SVH1BA1BB-S12Q	4 WAY DOUBLE ACTING/12 VDC	SHIM ADJ. 1500-3000 PSI
SVH1BA1BB-S24Q	4 WAY DOUBLE ACTING/24 VDC	SHIM ADJ. 1500-3000 PSI

### SPECIAL SECTIONS AVAILABLE:

Sections other than the standard models listed can be made to order. Use the order code Matrix below to generate a model number that meets your requirements. If you prefer, contact your Sales Representative with your specific requirements and a model number will be assigned for you. This model number can then be used for future orders. A minimum order quantity will apply to special valves. Please contact your Sales Representative.

### SOLENOID OPERATED SVW AND SVL SECTION

#### SECTION TYPE

W-Standard Work Section  
L-Lock Section (Use C Spool)

#### PORT SIZE

1. #8 SAE

#### SPOOL TYPE

A-3-Way 3-Position  
B-4-Way 3-Position  
C-4-Way 3-Position Motor

#### SPOOL ACTIONS

A - Spring Center

#### HANDLE OPTION

- |                                  |                          |
|----------------------------------|--------------------------|
| 1. Std. Lever Handle             | 4. Adjustable Handle     |
| 2. Less Handle Only              | 5. Tang Spool End Only   |
| 3. Less Complete Handle Assembly | 6. Clevis Spool End Only |

#### COIL VOLTAGE & TERMINATION \*

12Q, 12 VDC Double Spade  
12L, 12 VDC Double Wire  
12H, 12 VDC DIN 43650  
12W, 12VDC Weather Pack®  
24Q, 24 VDC Double Spade  
24 L, 24 VDC Double Wire  
24H, 24 VDC DIN 43650  
11C, 120 VAC Conduit  
11H, 120 VAC DIN 43650

#### SOLENOID AND MANUAL OPERATION

7. Vertical Handle  
8. Straight Handle  
11. Enclosed Handle  
12. Extended Enclosed Handle

### PORT RELIEF WORK SECTIONS

#### SECTION TYPE

H-Port Relief Section  
S-Series Section (Use G spool)

#### PORT SIZE

1. #8 SAE

#### SPOOL TYPE

A-3-Way 3-Position  
B-4-Way 3-Position  
C-4-Way 3-Position Motor  
G-4-Way Series

#### SPOOL ACTIONS

A - Spring Center

#### HANDLE OPTION

- |                                  |                              |
|----------------------------------|------------------------------|
| 1. Std. Lever Handle             | 5. Tang Spool End Only       |
| 2. Less Handle Only              | 6. Clevis Spool End Only     |
| 3. Less Complete Handle Assembly | 7. Vertical Handle           |
| 4. Adjustable Handle             | 12. Extended Enclosed Handle |

#### COIL VOLTAGE & TERMINATION\*

12Q, 12 VDC Double Spade  
12L, 12 VDC Double Wire  
12H, 12 VDC DIN 43650  
12W, 12 VDC Weather Pack®  
24Q, 24 VDC Double Spade  
24 L, 24 VDC Double Wire  
24H, 24 VDC DIN 43650  
11C, 120 VAC Conduit  
11H, 120 VAC DIN 43650

#### SOLENOID AND MANUAL OPERATION

#### PORT RELIEF “B” OPTION

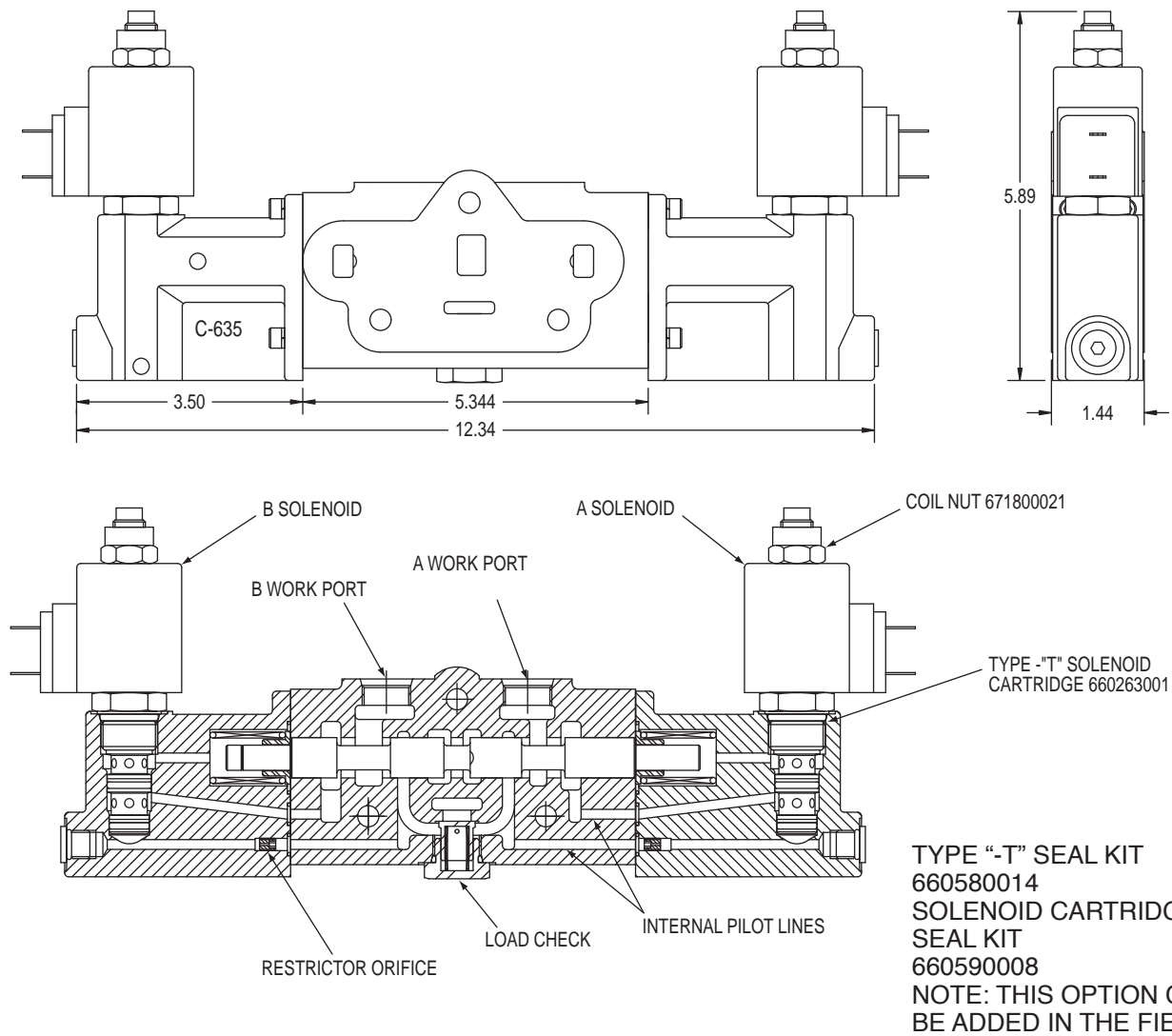
A-Relief Cavity Plugged  
B-Non-Adjustable Direct Acting Relief 1500-3000 PSI  
C-Non-Adjustable Direct Acting Relief 500-1500 PSI

#### PORT RELIEF “A” OPTION

A-Relief Cavity Plugged	G-Adjustable Direct Acting Relief 1500-3000
B-Non-Adjustable Direct Acting Relief 1500-3000 PSI	
C-Non-Adjustable Direct Acting Relief 500-1500 PSI	H-Adjustable Direct Acting Relief 500-1500 PSI

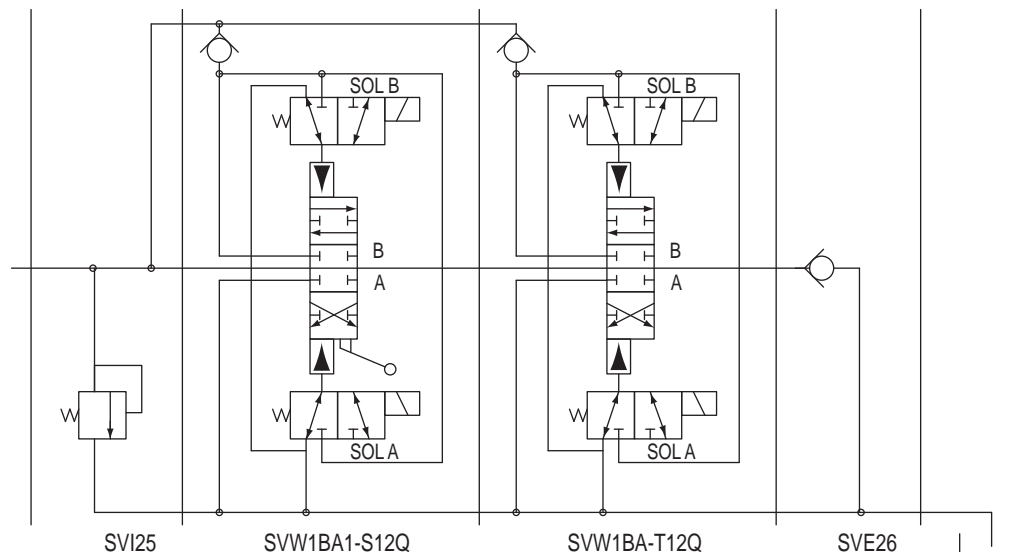
\*See page V34 for Coil details

# SOLENOID OPERATED TYPE “-T” WORK SECTION DIMENSIONAL DATA

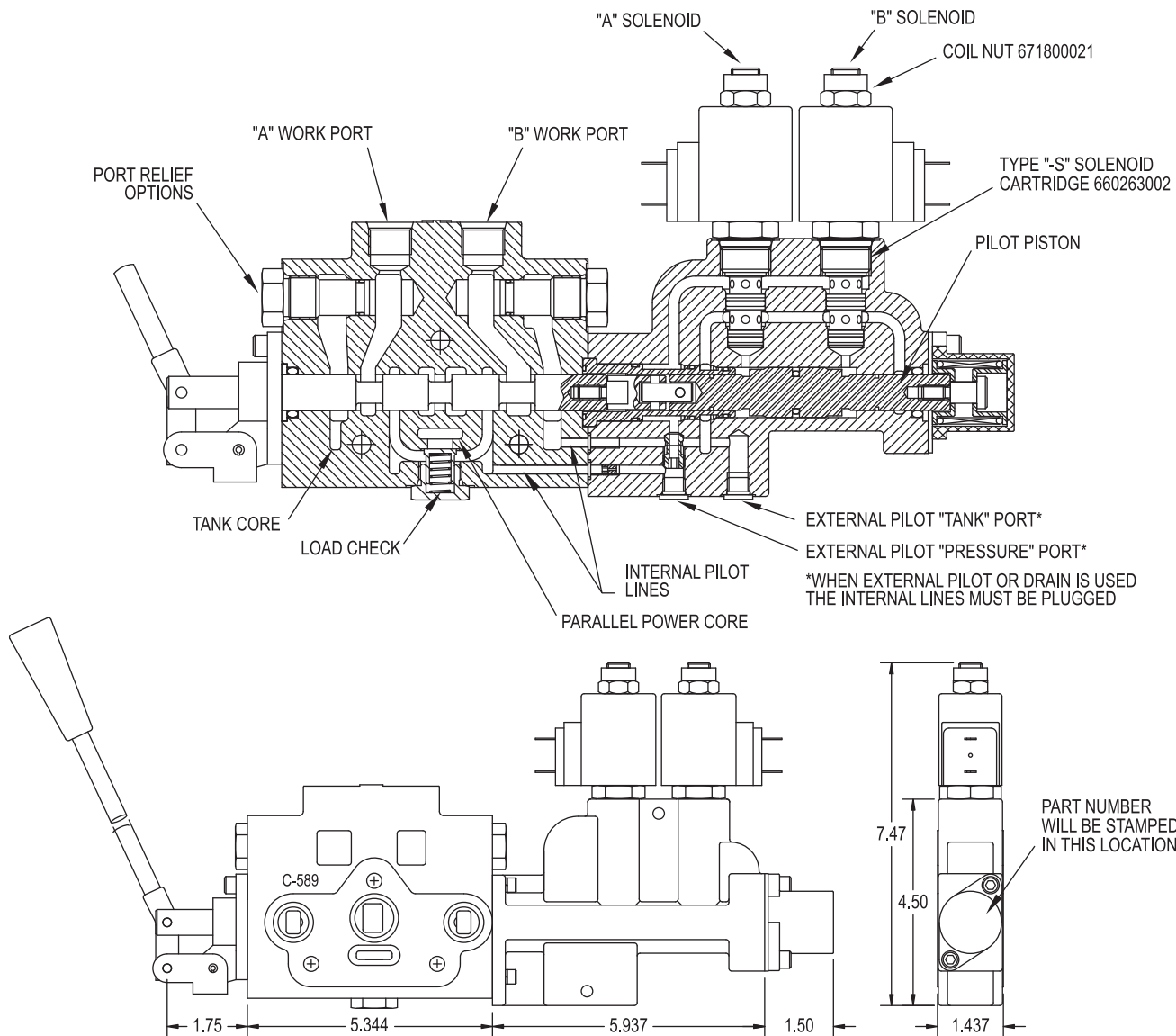


NOTE: For additional data on inlet and outlet sections, valve assemblies, etc. Please refer SV information in this catalog.

## SYMBOL EXAMPLE TWO SECTION STACK



# SOLENOID AND MANUAL OPERATED WORK SECTION TYPE "S" DIMENSIONAL DATA



TYPE "S" SEAL KIT 660580005  
SOLENOID CARTRIDGES SEAL KIT 660590008

NOTE: THIS OPTION CANNOT BE  
ADDED IN THE FIELD

NOTE: For additional dimensional data on inlet and outlet sections, valve assemblies, etc. please refer SV information in this catalog.

## SOLENOID COILS - ALL SOLENOID OPERATED SPOOLS

### COIL PART NUMBERS

671302002 12 VDC H TYPE COIL DIN 43650  
671302003 12 VDC L TYPE COIL DOUBLE WIRE  
671322004 12 VDC Q TYPE COIL DOUBLE SPADE  
671302013 12 VDC W TYPE COIL WEATHER PACK®  
671302006 24 VDC H TYPE COIL DIN 43650  
671302007 24 VDC L TYPE COIL DOUBLE WIRE  
671322008 24 VDC Q TYPE COIL DOUBLE SPADE  
671302009 120 VAC C TYPE COIL CONDUIT  
671302010 120 VAC H TYPE COIL DIN 43650

### COIL SPECIFICATIONS

DUTY RATING .....CONTINUOUS AT 100% VOLTAGE  
INGRESS PROTECTION RATING ..... IP65  
WATTAGE .....20 WATTS  
STABILIZED TEMPERATURE 217°F WITH 77°F AMBIENT  
AMP DRAW AT 77°

12VOLT ..... 1.70 AMPS  
24 VOLT ..... .83 AMPS  
120 VOLT..... .18 AMPS

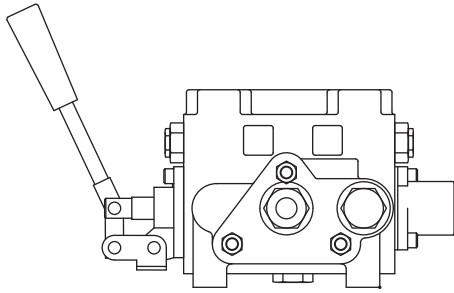
LEAD WIRE LENGTH ..... 18 GAUGE 12" LONG

AC COILS ARE INTERNALLY RECTIFIED WITH A FULL WAVE  
BRIDGE (NO IN RUSH CURRENT).

DIN STYLE COILS ARE DIN 43650 TYPE A.

USE WEATHER PACK® TYPE COILS WITH MALE PACKARD CONNECTOR #12015792  
"WEATHER PACK CONNECTORS".

PRINCE MANUFACTURING  
P.O. BOX 7000  
N. SIOUX CITY, SD 57049-7000  
PHONE (605) 235-1220  
FAX (605) 235-1082



# STACK VALVE ASSEMBLY QUOTATION REQUEST FORM

DATE \_\_\_\_\_  
SUBMITTED BY \_\_\_\_\_  
CUSTOMER \_\_\_\_\_  
ADDRESS \_\_\_\_\_  
\_\_\_\_\_  
PHONE \_\_\_\_\_  
FAX \_\_\_\_\_  
YEARLY REQUIREMENTS \_\_\_\_\_  
CURRENT SUPPLIER \_\_\_\_\_

VALVE ASSEMBLY MODEL  
NUMBER. ASSIGNED UPON  
RECEIVING REQUEST.

**FILL IN THE CHART BELOW USING ORDER CODE FROM SERIES 20 OR MODEL SV SECTION  
NOTE ANY PORT RESTRICTORS, JOYSTICKS HANDLES, ETC. IN SPACE PROVIDED**

ITEM	SECTION NUMBER	SECTION NOTES	LIST
INLET SECTION		RELIEF:                      PSI @                      GPM	
WORK SECTION 1		A RELIEF:    PSI @    GPM B RELIEF:    PSI @    GPM	
WORK SECTION 2		A RELIEF:    PSI @    GPM B RELIEF:    PSI @    GPM	
WORK SECTION 3		A RELIEF:    PSI @    GPM B RELIEF:    PSI @    GPM	
WORK SECTION 4		A RELIEF:    PSI @    GPM B RELIEF:    PSI @    GPM	
WORK SECTION 5		A RELIEF:    PSI @    GPM B RELIEF:    PSI @    GPM	
WORK SECTION 6		A RELIEF:    PSI @    GPM B RELIEF:    PSI @    GPM	
WORK SECTION 7		A RELIEF:    PSI @    GPM B RELIEF:    PSI @    GPM	
WORK SECTION 8		A RELIEF:    PSI @    GPM B RELIEF:    PSI @    GPM	
WORK SECTION 9		A RELIEF:    PSI @    GPM B RELIEF:    PSI @    GPM	
WORK SECTION 10		A RELIEF:    PSI @    GPM B RELIEF:    PSI @    GPM	
OUTLET SECTION			
TIE ROD KIT			
SPECIAL INSTRUCTIONS		ASSEMBLY CHARGE (SV ONLY)	
		TOTAL	

VALVES